



Tokyo, Japan  
26-28 February  
2014



London, UK  
04-06 March  
2014  
Stand Number: S2326



Barcelona, Spain  
10-13 March  
2014  
Stand Number: 6C40



Husum, Germany  
20 - 23 March  
2014



Shanghai, China  
20-22 May  
2014  
Stand Number: E5-535



Munich, Germany  
04-06 June  
2014



San Francisco, USA  
08-10 July  
2014



Las Vegas, USA  
20 - 23 October  
2014  
Stand Number: 2518

Local sales and after sales service and warranty support provided by



ABN 89 145 320 181  
Address: 5 / 109 Tulip Street  
Cheltenham , Victoria , 3192  
Australia  
Tel: +61 (0)3 8555 9516  
Email: service@ginlongaust.com.au  
Website: www.ginlongaust.com.au

Please record the serial number of your inverter and quote this when you contact us.



Ginlong Technologies Co.,Ltd

Address: No. 57 Jintong Road,  
Binhai Industrial Park,  
Xiangshan, Ningbo, Zhejiang, 315712  
China  
Tel: (+86) 574 6578 1806  
Fax: (+86) 574 6578 1606  
E-mail: sales@ginlong.com  
Website: www.ginlong.com



Feel Quality, Experience Reliability



## Why choose Solis Inverter?

- ▶ 8 local service points world wide
- ▶ 50 world top level R&D engineers
- ▶ 1,000 MW inverters annual production capacity
- ▶ 100,000 plus inverters installed and operated in last 10 years



Feel Quality, Experience Reliability

# Ginlong

Ningbo Ginlong Technologies has located its head office in Zhejiang, China and also has international representation through offices in Europe, the USA and Australia. The Ginlong Technologies company was established and has evolved to be a leader in its field through the vision of a single person wanting to make a difference and the team he has brought together to realise that vision.

The company has machine and electrical products manufacturing expertise that spans more than 20 years. Those years have seen a team of dedicated engineers brought together for their international experience and skills to focus on the research and development of high end renewable energy products and equipment in the small scale wind and solar PV industry. Ginlong Technologies has grown to be a highly specialised company in the design, R&D, and manufacturing of very high quality small scale wind turbine equipment and solar PV inverters based on the delivery of reliability, durability and enviable productivity to the renewable energy sector.

Inverters are technologically the most complex and are of critical importance as a component in the design and successful operation of a solar PV system. Inverters convert the DC current generated from the solar PV cells into an AC current suitable for use on site or for export to the power distribution grid network. Ginlong has continually maintained a strong investment in research and development of their products and that of the production methods employed to deliver their leading edge technology. The Ginlong research and development team includes several Ph.D holders who spearhead and direct our skilled and experienced engineers who are responsible for, and crucial in providing solutions to our client's R&D and production problems. Some of the innovative solutions have resulted in new patents for the Ginlong company to protect its product and design. Ginlong inverters are fully tested and accredited for certification to the local requirements for the countries they are distributed and supplied in.

Ginlong has developed and introduced some of the most advanced manufacturing technologies into their production processes including Surface Mount Technology (SMT), Wave Soldering (WS), up to date state of the art production management and quality assurance systems and procedures to support the consistent delivery of high quality, reliable, durable products that will maintain high productivity even in challenging environments.

Customer service is an important element of the products and services supplied by Ginlong Technologies. By establishing local after sales and technical support centres around the globe Ginlong has been able to provide its customers with real time support to resolve any queries that may be presented.

Ginlong Technologies has become one of the world's most competitive manufacturers of solar PV and wind grid tie inverters through its leading edge delivery of renewable technology based on quality, reliability, durability, and productivity.

## Contents

Solis-2G Single Phase Inverter

Solis Three Phase Inverter

PV and Wind Hybrid Inverter

Accessories

Installation Photos





# solis-1K-2G

inverter



## Leading Features

- ▶ Over 96% Max. efficiency
- ▶ Ultra wide input voltage range
- ▶ Precise MPPT algorithm
- ▶ Controlled PWM inverter technology
- ▶ Compact and light design for one-person easy installation
- ▶ IP65, visually pleasing for domestic environment
- ▶ RS485 WIFI GPRS interface
- ▶ Numerous protection functions

Model	Solis-1K-2G
<b>Input Side</b>	
Max. DC input voltage	500V
Start-up DC input voltage	120V
MPPT operating range	100-400V
Rated DC voltage	250V
Max. DC input current	10A
Number of MPP/Max strings per MPPT	1/1
<b>Output Side</b>	
Rated output power	1kW
Max. transient power	1.1kW
Rated AC grid voltage	230V
AC grid voltage range	180~270V(adjustable)
Operating phase	Single
Rated AC grid output current	4.3A
Max. AC output current	5.2A
Output power factor	>0.99
Grid current THD	Total THD<4%
DC injection current	<20mA
Rated grid frequency	50/60Hz
<b>Efficiency</b>	
Max. efficiency	>96%
Euro efficiency	>95.4%
MPPT efficiency	>99.9%
<b>Protection</b>	
DC reverse-polarity protection	Yes
DC switch for each MPPT	Yes
AC short circuit protection	Yes
AC output over current protection	Yes
Output over voltage protection - varistor	Yes
Ground fault monitoring	Yes
Grid monitoring	Yes
Islanding protection	Yes
Temperature protection	Yes
<b>General Data</b>	
Size	339W*565H*164D(mm)
Weight	11.0kg
Topology	Transformerless
Internal consumption	<1W(Night)
Running temperature	-25°C~60°C
Ingress protection	IP65
Operating range utility frequency (Hz)	47-52 or 57-62(adjustable)
Noise emission(typical)	<30 dBA
Cooling concept	Self convection
Max.operating altitude without derating	2000m
Designed lifetime	>20 years
Utility monitoring	Islanding protection $V_{AC}$ , $F_{AC}$ in accordance with UL 1741, G83/1, AS4777, VDE 0126-1-1
Operating surroundings humidity	0~95%
EMC	EN61000-6-1:2007 EN61000-6-3:2007
<b>Features</b>	
DC connection	Screw terminal
AC connection	Screw terminal
Display	LCD, 2 x 20 Z.
Interface	RS485/WiFi or GPRS(Optional)
Warranty	5-10 Years



# solis -1.5K-2G inverter



## Leading Features

- ▶ Over 96.5% Max. efficiency
- ▶ Ultra wide input voltage range
- ▶ Precise MPPT algorithm
- ▶ Controlled PWM inverter technology
- ▶ Compact and light design for one-person easy installation
- ▶ IP65, visually pleasing for domestic environment
- ▶ RS485 WIFI GPRS interface
- ▶ Numerous protection functions

Model	Solis-1.5K-2G
<b>Input Side</b>	
Max. DC input voltage	500V
Start-up DC input voltage	120V
MPPT operating range	100-400V
Rated DC voltage	250V
Max. DC input current	10A
Number of MPP/Max strings per MPPT	1/1
<b>Output Side</b>	
Rated output power	1.5kW
Max. transient power	1.7kW
Rated AC grid voltage	230V
AC grid voltage range	180~270V(adjustable)
Operating phase	Single
Rated AC grid output current	6.5A
Max. AC output current	8.1A
Output power factor	>0.99
Grid current THD	Total THD<4%
DC injection current	<20mA
Rated grid frequency	50/60Hz
<b>Efficiency</b>	
Max. efficiency	>96.5%
Euro efficiency	>96%
MPPT efficiency	>99.9%
<b>Protection</b>	
DC reverse-polarity protection	Yes
DC switch for each MPPT	Yes
AC short circuit protection	Yes
AC output over current protection	Yes
Output over voltage protection - varistor	Yes
Ground fault monitoring	Yes
Grid monitoring	Yes
Islanding protection	Yes
Temperature protection	Yes
<b>General Data</b>	
Size	339W*565H*164D(mm)
Weight	11.0kg
Topology	Transformerless
Internal consumption	<1W(Night)
Running temperature	-25°C~60°C
Ingress protection	IP65
Operating range utility frequency (Hz)	47-52 or 57-62(adjustable)
Noise emission(typical)	<30 dBA
Cooling concept	Self convection
Max.operating altitude without derating	2000m
Designed lifetime	>20 years
Utility monitoring	Islanding protection $V_{ac}$ , $F_{ac}$ in accordance with UL 1741, G83/1, AS4777, VDE 0126-1-1
Operating surroundings humidity	0~95%
EMC	EN61000-6-1:2007 EN61000-6-3:2007
<b>Features</b>	
DC connection	Screw terminal
AC connection	Screw terminal
Display	LCD, 2 x 20 Z.
Interface	RS485/WiFi or GPRS(Optional)
Warranty	5-10 Years



# solis-2K-2G

inverter



## Leading Features

- ▶ Over 97% Max. efficiency
- ▶ Ultra wide input voltage range
- ▶ Precise MPPT algorithm
- ▶ Controlled PWM inverter technology
- ▶ Compact and light design for one-person easy installation
- ▶ IP65, visually pleasing for domestic environment
- ▶ RS485 WIFI GPRS interface
- ▶ Numerous protection functions

Model	Solis-2K-2G
<b>Input Side</b>	
Max. DC input voltage	500V
Start-up DC input voltage	120V
MPPT operating range	100-400V
Rated DC voltage	250V
Max. DC input current	10A
Number of MPP/Max strings per MPPT	1/1
<b>Output Side</b>	
Rated output power	2kW
Max. transient power	2.2kW
Rated AC grid voltage	230V
AC grid voltage range	180~270V(adjustable)
Operating phase	Single
Rated AC grid output current	8.7A
Max. AC output current	10.5A
Output power factor	>0.99
Grid current THD	Total THD<4%
DC injection current	<20mA
Rated grid frequency	50/60Hz
<b>Efficiency</b>	
Max. efficiency	>97%
Euro efficiency	>96.4%
MPPT efficiency	>99.9%
<b>Protection</b>	
DC reverse-polarity protection	Yes
DC switch for each MPPT	Yes
AC short circuit protection	Yes
AC output over current protection	Yes
Output over voltage protection - varistor	Yes
Ground fault monitoring	Yes
Grid monitoring	Yes
Islanding protection	Yes
Temperature protection	Yes
<b>General Data</b>	
Size	339W*565H*164D(mm)
Weight	11.0kg
Topology	Transformerless
Internal consumption	<1W(Night)
Running temperature	-25°C~60°C
Ingress protection	IP65
Operating range utility frequency (Hz)	47-52 or 57-62(adjustable)
Noise emission(typical)	<30 dBA
Cooling concept	Self convection
Max.operating altitude without derating	2000m
Designed lifetime	>20 years
Utility monitoring	Islanding protection $V_{AC}$ , $F_{AC}$ in accordance with UL 1741, G83/1, AS4777, VDE 0126-1-1
Operating surroundings humidity	0~95%
EMC	EN61000-6-1:2007 EN61000-6-3:2007
<b>Features</b>	
DC connection	Screw terminal
AC connection	Screw terminal
Display	LCD, 2 x 20 Z.
Interface	RS485/WiFi or GPRS(Optional)
Warranty	5-10 Years



# solis-2.5K-2G

inverter



## Leading Features

- ▶ Over 97% Max. efficiency
- ▶ Ultra wide input voltage range
- ▶ Dual MPPT design with precise MPPT algorithm
- ▶ Controlled PWM inverter technology
- ▶ Compact and light design for one-person easy installation
- ▶ IP65, visually pleasing for domestic environment
- ▶ RS485 WIFI GPRS interface
- ▶ Numerous protection functions

Model	Solis-2.5K-2G
<b>Input Side</b>	
Max. DC input voltage	600V
Start-up DC input voltage	120V
MPPT operating range	100-500V
Rated DC voltage	300V
Max. DC input current	10A+10A
Number of MPP/Max strings per MPPT	2/1
<b>Output Side</b>	
Rated output power	2.5kW
Max. transient power	2.8kW
Rated AC grid voltage	230V
AC grid voltage range	180~270V(adjustable)
Operating phase	Single
Rated AC grid output current	10.9A
Max. AC output current	13.3A
Output power factor	>0.99
Grid current THD	Total THD<4%
DC injection current	<20mA
Rated grid frequency	50/60Hz
<b>Efficiency</b>	
Max. efficiency	>97%
Euro efficiency	>96.4%
MPPT efficiency	>99.9%
<b>Protection</b>	
DC reverse-polarity protection	Yes
DC switch for each MPPT	Yes
AC short circuit protection	Yes
AC output over current protection	Yes
Output over voltage protection - varistor	Yes
Ground fault monitoring	Yes
Grid monitoring	Yes
Islanding protection	Yes
Temperature protection	Yes
<b>General Data</b>	
Size	339W*565H*173D(mm)
Weight	14.5kg
Topology	Transformerless
Internal consumption	<1W(Night)
Running temperature	-25°C~60°C
Ingress protection	IP65
Operating range utility frequency (Hz)	47-52 or 57-62(adjustable)
Noise emission(typical)	<30 dBA
Cooling concept	Self convection
Max.operating altitude without derating	2000m
Designed lifetime	>20 years
Utility monitoring	Islanding protection $V_{ac}$ , $F_{ac}$ in accordance with UL 1741, G83/1, AS4777, VDE 0126-1-1
Operating surroundings humidity	0~95%
EMC	EN61000-6-1:2007 EN61000-6-3:2007
<b>Features</b>	
DC connection	Screw terminal
AC connection	Screw terminal
Display	LCD, 2 x 20 Z.
Interface	RS485/WiFi or GPRS(Optional)
Warranty	5-10 Years



# solis-3K-2G inverter



## Leading Features

- ▶ Over 97% Max. efficiency
- ▶ Ultra wide input voltage range
- ▶ Dual MPPT design with precise MPPT algorithm
- ▶ Controlled PWM inverter technology
- ▶ Compact and light design for one-person easy installation
- ▶ IP65, visually pleasing for domestic environment
- ▶ RS485 WIFI GPRS interface
- ▶ Numerous protection functions

Model	Solis-3K-2G
<b>Input Side</b>	
Max. DC input voltage	600V
Start-up DC input voltage	120V
MPPT operating range	100-500V
Rated DC voltage	300V
Max. DC input current	10A+10A
Number of MPP/Max strings per MPPT	2/1
<b>Output Side</b>	
Rated output power	3kW
Max. transient power	3.3kW
Rated AC grid voltage	230V
AC grid voltage range	180~270V(adjustable)
Operating phase	Single
Rated AC grid output current	13A
Max. AC output current	15.7A
Output power factor	>0.99
Grid current THD	Total THD<4%
DC injection current	<20mA
Rated grid frequency	50/60Hz
<b>Efficiency</b>	
Max. efficiency	>97%
Euro efficiency	>96.4%
MPPT efficiency	>99.9%
<b>Protection</b>	
DC reverse-polarity protection	Yes
DC switch for each MPPT	Yes
AC short circuit protection	Yes
AC output over current protection	Yes
Output over voltage protection - varistor	Yes
Ground fault monitoring	Yes
Grid monitoring	Yes
Islanding protection	Yes
Temperature protection	Yes
<b>General Data</b>	
Size	339W*565H*173D(mm)
Weight	14.5kg
Topology	Transformerless
Internal consumption	<1W(Night)
Running temperature	-25°C~60°C
Ingress protection	IP65
Operating range utility frequency (Hz)	47-52 or 57-62(adjustable)
Noise emission(typical)	<30 dBA
Cooling concept	Self convection
Max.operating altitude without derating	2000m
Designed lifetime	>20 years
Utility monitoring	Islanding protection $V_{ac}$ , $F_{ac}$ in accordance with UL 1741, G83/1, AS4777, VDE 0126-1-1
Operating surroundings humidity	0~95%
EMC	EN61000-6-1:2007 EN61000-6-3:2007
<b>Features</b>	
DC connection	Screw terminal
AC connection	Screw terminal
Display	LCD, 2 x 20 Z.
Interface	RS485/WiFi or GPRS(Optional)
Warranty	5-10 Years





# solis-3.6K-2G

inverter



## Leading Features

- ▶ Over 97% Max. efficiency
- ▶ Ultra wide input voltage range
- ▶ Dual MPPT design with precise MPPT algorithm
- ▶ Controlled PWM inverter technology
- ▶ Compact and light design for one-person easy installation
- ▶ IP65, visually pleasing for domestic environment
- ▶ RS485 WIFI GPRS interface
- ▶ Numerous protection functions

Model	Solis-3.6K-2G
<b>Input Side</b>	
Max. DC input voltage	600V
Start-up DC input voltage	120V
MPPT operating range	100-500V
Rated DC voltage	300V
Max. DC input current	10A+10A
Number of MPP/Max strings per MPPT	2/1
<b>Output Side</b>	
Rated output power	3.6kW
Max. transient power	4kW
Rated AC grid voltage	230V
AC grid voltage range	180~270V(adjustable)
Operating phase	Single
Rated AC grid output current	15.7A
Max. AC output current	16A
Output power factor	>0.99
Grid current THD	Total THD<4%
DC injection current	<20mA
Rated grid frequency	50/60Hz
<b>Efficiency</b>	
Max. efficiency	>97%
Euro efficiency	>96.4%
MPPT efficiency	>99.9%
<b>Protection</b>	
DC reverse-polarity protection	Yes
DC switch for each MPPT	Yes
AC short circuit protection	Yes
AC output over current protection	Yes
Output over voltage protection - varistor	Yes
Ground fault monitoring	Yes
Grid monitoring	Yes
Islanding protection	Yes
Temperature protection	Yes
<b>General Data</b>	
Size	339W*565H*173D(mm)
Weight	14.5kg
Topology	Transformerless
Internal consumption	<1W(Night)
Running temperature	-25°C~60°C
Ingress protection	IP65
Operating range utility frequency (Hz)	47-52 or 57-62(adjustable)
Noise emission(typical)	<30 dBA
Cooling concept	Self convection
Max.operating altitude without derating	2000m
Designed lifetime	>20 years
Utility monitoring	Islanding protection $V_{ac}$ , $F_{ac}$ in accordance with UL 1741, G83/1, AS4777, VDE 0126-1-1
Operating surroundings humidity	0~95%
EMC	EN61000-6-1:2007 EN61000-6-3:2007
<b>Features</b>	
DC connection	Screw terminal
AC connection	Screw terminal
Display	LCD, 2 x 20 Z.
Interface	RS485/WiFi or GPRS(Optional)
Warranty	5-10 Years



# solis-4K-2G

inverter



## Leading Features

- ▶ Over 97% Max. efficiency
- ▶ Ultra wide input voltage range
- ▶ Dual MPPT design with precise MPPT algorithm
- ▶ Controlled PWM inverter technology
- ▶ Compact and light design for one-person easy installation
- ▶ IP65, visually pleasing for domestic environment
- ▶ RS485 WIFI GPRS interface
- ▶ Numerous protection functions

Model	Solis-4K-2G
<b>Input Side</b>	
Max. DC input voltage	600V
Start-up DC input voltage	120V
MPPT operating range	100-500V
Rated DC voltage	300V
Max. DC input current	15A+15A
Number of MPP/Max strings per MPPT	2/1
<b>Output Side</b>	
Rated output power	4kW
Max. transient power	4.4kW
Rated AC grid voltage	230V
AC grid voltage range	180~270V(adjustable)
Operating phase	Single
Rated AC grid output current	17.4A
Max. AC output current	21A
Output power factor	>0.99
Grid current THD	Total THD<4%
DC injection current	<20mA
Rated grid frequency	50/60Hz
<b>Efficiency</b>	
Max. efficiency	>97%
Euro efficiency	>96.4%
MPPT efficiency	>99.9%
<b>Protection</b>	
DC reverse-polarity protection	Yes
DC switch for each MPPT	Yes
AC short circuit protection	Yes
AC output over current protection	Yes
Output over voltage protection - varistor	Yes
Ground fault monitoring	Yes
Grid monitoring	Yes
Islanding protection	Yes
Temperature protection	Yes
<b>General Data</b>	
Size	339W*565H*173D(mm)
Weight	15.5kg
Topology	Transformerless
Internal consumption	<1W(Night)
Running temperature	-25°C~60°C
Ingress protection	IP65
Operating range utility frequency (Hz)	47-52 or 57-62(adjustable)
Noise emission(typical)	<30 dBA
Cooling concept	Self convection
Max.operating altitude without derating	2000m
Designed lifetime	>20 years
Utility monitoring	Islanding protection $V_{ac}$ , $F_{ac}$ in accordance with UL 1741, G59/2, AS4777, VDE 0126-1-1
Operating surroundings humidity	0~95%
EMC	EN61000-6-1:2007 EN61000-6-3:2007
<b>Features</b>	
DC connection	Screw terminal
AC connection	Screw terminal
Display	LCD, 2 x 20 Z.
Interface	RS485/WiFi or GPRS(Optional)
Warranty	5-10 Years



# solis-4.6K-2G

inverter



## Leading Features

- ▶ Over 97% Max. efficiency
- ▶ Ultra wide input voltage range
- ▶ Dual MPPT design with precise MPPT algorithm
- ▶ Controlled PWM inverter technology
- ▶ Compact and light design for one-person easy installation
- ▶ IP65, visually pleasing for domestic environment
- ▶ RS485 WIFI GPRS interface
- ▶ Numerous protection functions

Model	Solis-4.6K-2G
<b>Input Side</b>	
Max. DC input voltage	600V
Start-up DC input voltage	120V
MPPT operating range	100-500V
Rated DC voltage	300V
Max. DC input current	15A+15A
Number of MPP/Max strings per MPPT	2/1
<b>Output Side</b>	
Rated output power	4.6kW
Max. transient power	5kW
Rated AC grid voltage	230V
AC grid voltage range	180~270V(adjustable)
Operating phase	Single
Rated AC grid output current	20A
Max. AC output current	23.8A
Output power factor	>0.99
Grid current THD	Total THD<4%
DC injection current	<20mA
Rated grid frequency	50/60Hz
<b>Efficiency</b>	
Max. efficiency	>97%
Euro efficiency	>96.5%
MPPT efficiency	>99.9%
<b>Protection</b>	
DC reverse-polarity protection	Yes
DC switch for each MPPT	Yes
AC short circuit protection	Yes
AC output over current protection	Yes
Output over voltage protection - varistor	Yes
Ground fault monitoring	Yes
Grid monitoring	Yes
Islanding protection	Yes
Temperature protection	Yes
<b>General Data</b>	
Size	339W*565H*173D(mm)
Weight	15.5kg
Topology	Transformerless
Internal consumption	<1W(Night)
Running temperature	-25°C~60°C
Ingress protection	IP65
Operating range utility frequency (Hz)	47-52 or 57-62(adjustable)
Noise emission(typical)	<30 dBA
Cooling concept	Self convection
Max.operating altitude without derating	2000m
Designed lifetime	>20 years
Utility monitoring	Islanding protection V <sub>ac</sub> , F <sub>ac</sub> in accordance with UL 1741, G59/2, AS4777, VDE 0126-1-1
Operating surroundings humidity	0~95%
EMC	EN61000-6-1:2007 EN61000-6-3:2007
<b>Features</b>	
DC connection	Screw terminal
AC connection	Screw terminal
Display	LCD, 2 x 20 Z.
Interface	RS485/WiFi or GPRS(Optional)
Warranty	5-10 Years



# solis-5K-2G inverter



## Leading Features

- ▶ Over 97% Max. efficiency
- ▶ Ultra wide input voltage range
- ▶ Dual MPPT design with precise MPPT algorithm
- ▶ Controlled PWM inverter technology
- ▶ Compact and light design for one-person easy installation
- ▶ IP65, visually pleasing for domestic environment
- ▶ RS485 WIFI GPRS interface
- ▶ Numerous protection functions

Model	Solis-5K-2G
<b>Input Side</b>	
Max. DC input voltage	600V
Start-up DC input voltage	120V
MPPT operating range	100-500V
Rated DC voltage	300V
Max. DC input current	15A+15A
Number of MPP/Max strings per MPPT	2/1
<b>Output Side</b>	
Rated output power	5kW
Max. transient power	5kW
Rated AC grid voltage	230V
AC grid voltage range	180~270V(adjustable)
Operating phase	Single
Rated AC grid output current	21.7A
Max. AC output current	23.8A
Output power factor	>0.99
Grid current THD	Total THD<4%
DC injection current	<20mA
Rated grid frequency	50/60Hz
<b>Efficiency</b>	
Max. efficiency	>97%
Euro efficiency	>96.5%
MPPT efficiency	>99.9%
<b>Protection</b>	
DC reverse-polarity protection	Yes
DC switch for each MPPT	Yes
AC short circuit protection	Yes
AC output over current protection	Yes
Output over voltage protection - varistor	Yes
Ground fault monitoring	Yes
Grid monitoring	Yes
Islanding protection	Yes
Temperature protection	Yes
<b>General Data</b>	
Size	339W*565H*173D(mm)
Weight	15.5kg
Topology	Transformerless
Internal consumption	<1W(Night)
Running temperature	-25°C~60°C
Ingress protection	IP65
Operating range utility frequency (Hz)	47-52 or 57-62(adjustable)
Noise emission(typical)	<30 dBA
Cooling concept	Self convection
Max.operating altitude without derating	2000m
Designed lifetime	>20 years
Utility monitoring	Islanding protection $V_{ac}$ , $F_{ac}$ in accordance with UL 1741, G59/2, AS4777, VDE 0126-1-1
Operating surroundings humidity	0~95%
EMC	EN61000-6-1:2007 EN61000-6-3:2007
<b>Features</b>	
DC connection	Screw terminal
AC connection	Screw terminal
Display	LCD, 2 x 20 Z.
Interface	RS485/WiFi or GPRS(Optional)
Warranty	5~10 Years



# solis -6K inverter



## Leading Features

- ▶ Three phase output
- ▶ Over 97.5% Max. efficiency
- ▶ 250V – 800V input voltage range
- ▶ Dual MPPT design with precise MPPT algorithm
- ▶ Controlled PWM inverter technology
- ▶ Compact and light design for one-person easy installation
- ▶ IP65, visually pleasing for domestic environment
- ▶ RS485 WIFI GPRS interface
- ▶ Numerous protection functions

Model	Solis-6K
<b>Input Side</b>	
Max. DC input voltage	1000V
Start-up DC input voltage	300V
MPPT operating range	250-800V
Rated DC voltage	400V
Max. DC input current	15A+15A
Number of MPP/Max strings per MPPT	2/2
<b>Output Side</b>	
Rated output power	6kW
Max. transient power	6.6kW
Rated AC grid voltage	400V
AC grid voltage range	313~470V(adjustable)
Operating phase	three
Rated AC grid output current	8.7A
Max. AC output current	10.5A
Output power factor	>0.99
Grid current THD	Total THD<4%
DC injection current	<20mA
Rated grid frequency	50/60Hz
<b>Efficiency</b>	
Max. efficiency	>97.5%
Euro efficiency	>96.8%
MPPT efficiency	>99.9%
<b>Protection</b>	
DC reverse-polarity protection	Yes
DC switch for each MPPT	Yes
AC short circuit protection	Yes
AC output over current protection	Yes
Output over voltage protection - varistor	Yes
Ground fault monitoring	Yes
Grid monitoring	Yes
Islanding protection	Yes
Temperature protection	Yes
<b>General Data</b>	
Size	430W*600H*220D(mm)
Weight	27kg
Topology	Transformerless
Internal consumption	<1W(Night)
Running temperature	-25°C~60°C
Ingress protection	IP65
Operating range utility frequency (Hz)	47-52 or 57-62(adjustable)
Noise emission(typical)	<30 dBA
Cooling concept	Self convection
Max.operating altitude without derating	2000m
Designed lifetime	>20 years
Utility monitoring	Islanding protection $V_{AC}$ , $F_{AC}$ in accordance with UL 1741, G83/1, AS4777, VDE 0126-1-1
Operating surroundings humidity	0~95%
EMC	EN61000-6-1:2007 EN61000-6-3:2007
<b>Features</b>	
DC connection	Screw terminal
AC connection	Screw terminal
Display	LCD, 2 x 20 Z.
Interface	RS485/WiFi or GPRS(Optional)
Warranty	5~10 Years



# solis-10K inverter



## Leading Features

- ▶ Three phase output
- ▶ Over 97.5% Max. efficiency
- ▶ 300V – 800V input voltage range
- ▶ Dual MPPT design with precise MPPT algorithm
- ▶ Controlled PWM inverter technology
- ▶ Compact and light design for one-person easy installation
- ▶ IP65, visually pleasing for domestic environment
- ▶ RS485 WIFI GPRS interface
- ▶ Numerous protection functions

Model	Solis-10K
<b>Input Side</b>	
Max. DC input voltage	1000V
Start-up DC input voltage	350V
MPPT operating range	300-800V
Rated DC voltage	400V
Max. DC input current	15A+15A
Number of MPP/Max strings per MPPT	2/2
<b>Output Side</b>	
Rated output power	10kW
Max. transient power	11kW
Rated AC grid voltage	400V
AC grid voltage range	313~470V(adjustable)
Operating phase	three
Rated AC grid output current	14.5A
Max. AC output current	16A
Output power factor	>0.99
Grid current THD	Total THD<4%
DC injection current	<20mA
Rated grid frequency	50/60Hz
<b>Efficiency</b>	
Max. efficiency	>97.5%
Euro efficiency	>96.8%
MPPT efficiency	>99.9%
<b>Protection</b>	
DC reverse-polarity protection	Yes
DC switch for each MPPT	Yes
AC short circuit protection	Yes
AC output over current protection	Yes
Output over voltage protection - varistor	Yes
Ground fault monitoring	Yes
Grid monitoring	Yes
Islanding protection	Yes
Temperature protection	Yes
<b>General Data</b>	
Size	430W*600H*220D(mm)
Weight	27kg
Topology	Transformerless
Internal consumption	<1W(Night)
Running temperature	-25°C~60°C
Ingress protection	IP65
Operating range utility frequency (Hz)	47-52 or 57-62(adjustable)
Noise emission(typical)	<30 dBA
Cooling concept	Self convection
Max.operating altitude without derating	2000m
Designed lifetime	>20 years
Utility monitoring	Islanding protection $V_{AC}$ , $F_{AC}$ in accordance with UL 1741, G83/1, AS4777, VDE 0126-1-1
Operating surroundings humidity	0~95%
EMC	EN61000-6-1:2007 EN61000-6-3:2007
<b>Features</b>	
DC connection	Screw terminal
AC connection	Screw terminal
Display	LCD, 2 x 20 Z.
Interface	RS485/WiFi or GPRS(Optional)
Warranty	5~10 Years



# solis-15K

inverter



## Leading Features

- ▶ Three phase output
- ▶ Over 97.5% Max. efficiency
- ▶ 300V – 800V input voltage range
- ▶ Dual MPPT design with precise MPPT algorithm
- ▶ Controlled PWM inverter technology
- ▶ Compact and light design for one-person easy installation
- ▶ IP65, visually pleasing for domestic environment
- ▶ RS485 WIFI GPRS interface
- ▶ Numerous protection functions

Model	Solis-15K
<b>Input Side</b>	
Max. DC input voltage	1000V
Start-up DC input voltage	350V
MPPT operating range	300-800V
Rated DC voltage	600V
Max. DC input current	18A+18A
Number of MPP/Max strings per MPPT	2/2
<b>Output Side</b>	
Rated output power	15kW
Max. transient power	15kW
Rated AC grid voltage	400V
AC grid voltage range	313~470V(adjustable)
Operating phase	three
Rated AC grid output current	21.7A
Max. AC output current	24A
Output power factor	>0.99
Grid current THD	Total THD<4%
DC injection current	<50mA
Rated grid frequency	50/60Hz
<b>Efficiency</b>	
Max. efficiency	>97.5%
Euro efficiency	>96.8%
MPPT efficiency	>99.9%
<b>Protection</b>	
DC reverse-polarity protection	Yes
DC switch for each MPPT	Yes
AC short circuit protection	Yes
AC output over current protection	Yes
Output over voltage protection - varistor	Yes
Ground fault monitoring	Yes
Grid monitoring	Yes
Islanding protection	Yes
Temperature protection	Yes
<b>General Data</b>	
Size	430W*600H*220D(mm)
Weight	30kg
Topology	Transformerless
Internal consumption	<1W(Night)
Running temperature	-25°C~60°C
Ingress protection	IP65
Operating range utility frequency (Hz)	47-52 or 57-62(adjustable)
Noise emission(typical)	<50 dBA
Cooling concept	Forced air cooling
Max.operating altitude without derating	2000m
Designed lifetime	>20 years
Utility monitoring	Islanding protection $V_{AC}$ , $F_{AC}$ in accordance with UL 1741, G59/2, AS4777, VDE 0126-1-1
Operating surroundings humidity	0~95%
EMC	EN61000-6-1:2007 EN61000-6-3:2007
<b>Features</b>	
DC connection	Screw terminal
AC connection	Screw terminal
Display	LCD, 2 x 20 Z.
Interface	RS485/WiFi or GPRS(Optional)
Warranty	5-10 Years

# solis-5K-H inverter



## Leading Features

- ▶ Over 97% Max. efficiency
- ▶ 30V ~ 540V/100V ~ 500V of Wind/PV input voltage range
- ▶ 40 point programmable, linearly extrapolated power curve for wind version
- ▶ Precise MPPT algorithm
- ▶ Specific grid-connection controlling algorithm for wind turbine
- ▶ Controlled PWM inverter technology
- ▶ Compact and light design for one-person easy installation
- ▶ IP65, visually pleasing for domestic environment
- ▶ RS485 WIFI GPRS interface
- ▶ Numerous protection functions

		Solis-5K-H	
Energy source		Wind channel	+ PV channel
<b>Input Side</b>			
Max. DC input voltage		600V	
Start-up DC input voltage	40V		120V
MPPT operating range	30-540V		100-500V
MPPT mode	Power curve tracking		Max power point tracking
Rated DC voltage		300V	
Max. DC input current	15A		15A
Number of MPP/Max strings per MPPT	1/1		1/1
<b>Output Side</b>			
Rated output power		5kW(PV and Wind in total)	
Max. transient power		5kW	
Rated AC grid voltage		230V	
AC grid voltage range		180~270V(adjustable)	
Operating phase		single	
Rated AC grid output current		21.7A	
Max. AC output current		23.8A	
Output power factor		>0.99	
Grid current THD		Total THD<4%	
DC injection current		<50mA	
Rated grid frequency		50/60Hz	
<b>Efficiency</b>			
Max. efficiency		>97%	
Euro efficiency		>96.5%	
MPPT efficiency		>99.9%	
<b>Protection</b>			
DC reverse-polarity protection		Yes	
DC switch for each MPPT		Yes	
AC short circuit protection		Yes	
AC output over current protection		Yes	
Output over voltage protection - varistor		Yes	
Ground fault monitoring		Yes	
Grid monitoring		Yes	
Islanding protection		Yes	
Temperature protection		Yes	
<b>General Data</b>			
Size		339W*565H*173D(mm)	
Weight		15.5kg	
Topology		Transformerless	
Internal consumption	<6W(No wind)		<1W(Night)
Running temperature		-25°C~60°C	
Ingress protection		IP65	
Operating range utility frequency (Hz)		47-52 or 57-62(adjustable)	
Noise emission(typical)		<30 dBA	
Cooling concept		Self convection	
Max.operating altitude without derating		2000m	
Designed lifetime		>20 years	
Utility monitoring		Islanding protection V <sub>ac</sub> , F <sub>ac</sub> in accordance with UL 1741, G59/2, AS4777, VDE 0126-1-1	
Operating surroundings humidity		0~95%	
EMC		EN61000-6-1:2007 EN61000-6-3:2007	
<b>Features</b>			
DC connection		Screw terminal	
AC connection		Screw terminal	
Display		LCD, 2 x 20 Z.	
Interface		RS485/WiFi or GPRS(Optional)	
Warranty		5~10 Years	



# Ginlong Monitoring System

## DLB-S-WE/DLB-S-G



Data Logging Box WiFi



Data Logging Box GPRS

### Leading Features

#### Data Logging Box WiFi

- ▶ Quick installation and easy operation
- ▶ Monitoring your system and data anytime via WiFi
- ▶ Easy visualization of data and other information via Internet
- ▶ Comprehensive analyzing system in case of any possible faults

#### Data Logging Box GPRS

- ▶ Quick installation and easy operation
- ▶ GPRS communication supporting remote monitoring
- ▶ Multi-functional protections keeping your system from faults
- ▶ Keeping users informed of status and data via mobile device

General	Data Logging Box WiFi	Data Logging Box GPRS
Max. number of inverters		10
Inverter communication		RS485
Remote communication	WiFi (802.11 b/g/n)/Ethernet	GPRS
Max. communication range		<1km
Communication rate		9600bps (adjustable)
WiFi frequency	2.4GHz	800/900/1800/1900MHz
WiFi communication range	300m in outdoor open area without obstruction	---
WiFi transmitting power	802.11b/g/n:+20dBm/ +18dBm/15dBm (Max)	Class 4 (2W)/Class 1 (1W)
Data collect intervals		5 minutes
Preferences setting	Web server/ Serial AT instruction	Serial AT instruction
Firmware updates		Serial/Wireless
Data access	Serial/WiFi point-to-point/Remote server	Serial/Remote server
Status display		4LEDs
<b>Electrical</b>		
Input voltage		DC 5V
Static power consumption	<1.6W	<2W
Max. instantaneous power consumption	<2.5W	<3W
<b>Environmental</b>		
Operating temperature		-10~+65°C
Operating humidity		10%~90% Relative humidity, no condensation
Storage temperature		-40~+85°C
Storage humidity		<40%
Protection class		IP21
<b>Physical</b>		
Dimension (L*W*H)		110mm*86mm*26mm
Weight	108g	102g
<b>Other</b>		
Warranty		5 years
Certificates		FCC, CE, RoHS
Installation method		Wall mounted or horizontal

# Ginlong Monitoring System

## DLS-S-WE/DLS-S-G



Data Logging Stick WiFi/GPRS

### Leading Features

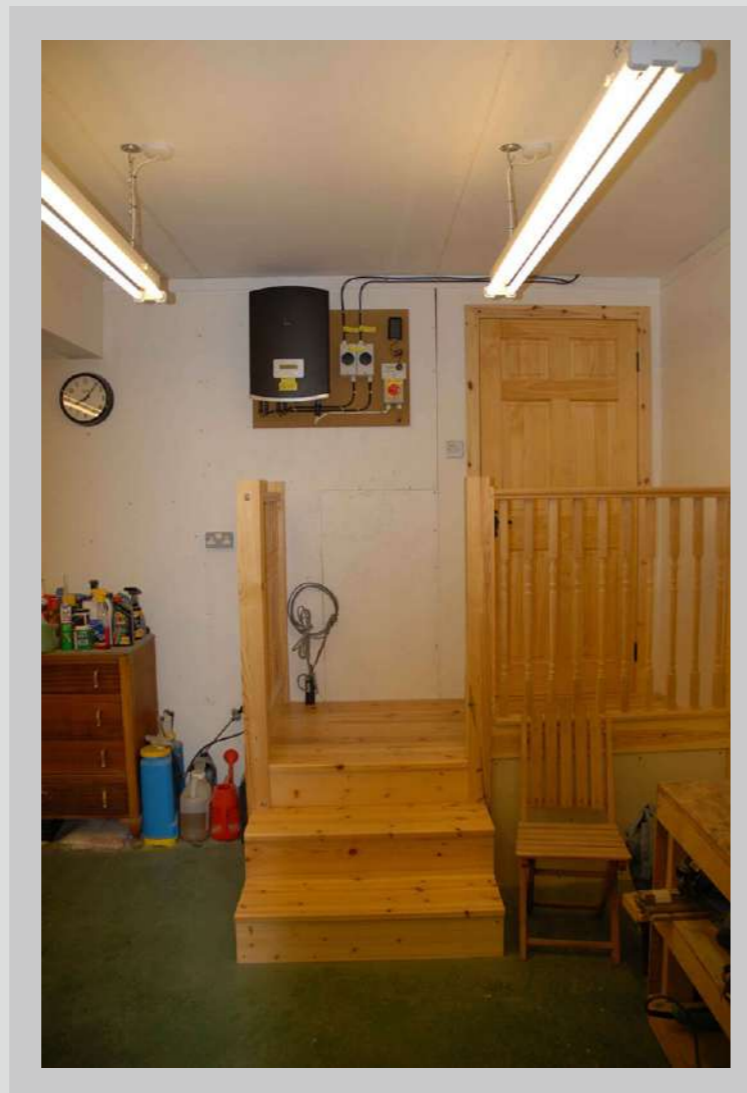
#### Data Logging Stick WiFi

- ▶ Quick installation and easy operation
- ▶ Enabling local and remote monitoring
- ▶ WiFi communication supporting remote monitoring
- ▶ Easy visualization of data and other information via Internet

#### Data Logging Stick GPRS

- ▶ Quick installation and easy operation
- ▶ Connecting inverters with 'plug and play' function
- ▶ Easy visualization of data and other information via mobile device
- ▶ GPRS communication enabling mobile monitoring anytime anywhere

General	Data Logging Stick WiFi	Data Logging Stick GPRS
Max. number of inverters		1
Inverter communication		4Pin
Remote communication	WiFi (802.11 b/g/n)	GPRS Class 12
Communication rate		9600bps
WiFi frequency	2.412GHz-2.484GHz	850/900/1800/1900 MHz
GPRS multi-slot	---	12/10/8
WiFi communication range	100 m in outdoor open area without obstruction	---
WiFi transmitting power	802.11b: +20dBm (Max) 802.11g: +18dBm (Max) 802.11n: +15dBm (Max) Configurable by users	---
WiFi receiving sensitivity	802.11b: -89dBm 802.11g: -81dBm 802.11n: -71dBm	---
GPRS Mobile Station	---	Class B
Compatible with the GSM Phase 2/2 +	---	Class 4 (2W @ 850/900 MHz) Class 1 (1W @ 1800/1900 MHz)
External antenna	I-PEX antenna	I-PEX connector
Data collection intervals	5 minutes	---
Data interface		UART: 9600bps
Preferences setting	Web server	---
Firmware updates		Wireless
Data access		Remote server
<b>Electrical</b>		
Input voltage	DC 5V	DC 5V (+/-5%)
Working current	130mA@5V	30mA~200mA
Static power consumption	---	<0.5W
Max. instantaneous power consumption	---	<1W
<b>Environmental</b>		
Operating temperature		-10~+85°C
Operating humidity		10%-90% Relative humidity, no condensation
Storage temperature		-40~+125°C
Storage humidity		<40%
Protection class		IP65
<b>Physical</b>		
Dimension(L*W*H)		118mm*43mm*43mm
Weight		56g
<b>Other</b>		
Warranty		5 years
Certificates		FCC,CE



# Installation Photos



